



ICS / SEMS / NIMS

Combo Class

Housekeeping

- In case we need to evacuate
- Restrooms

Online Classes

- FEMA Independent Study
(IS100, 200 & 700)
 - www.training.fema.gov
- California Specialized Training
Institute
(SEMS Intro)
www.oes.ca.gov

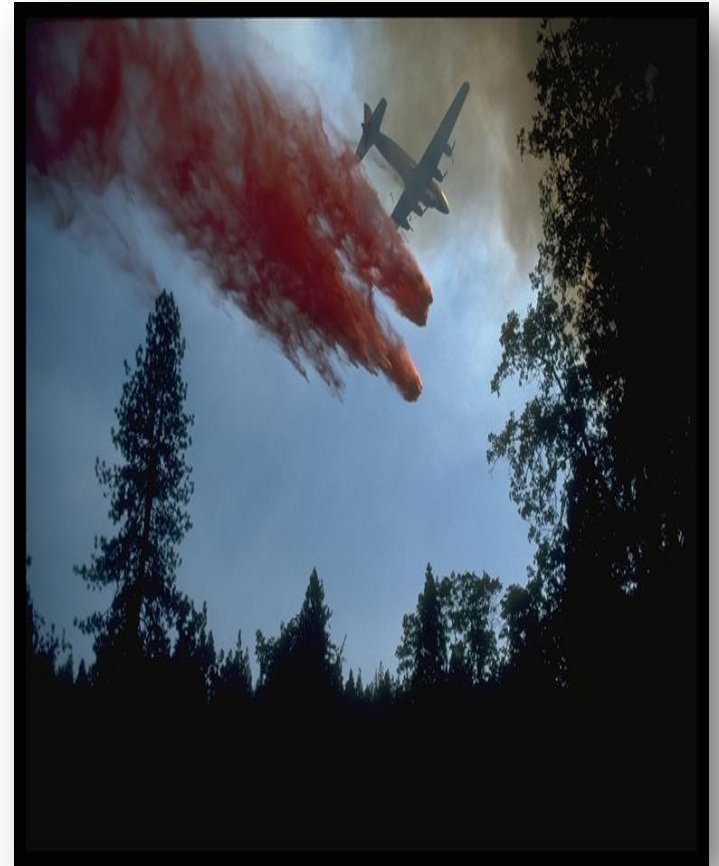
Incident Command System



ICS/SEMS/NIMS
COMBO CLASS

Incident Command System

- Developed under Firescope in the 1970s
- Used to manage emergency and non-emergency events
- Based on organizational best practices



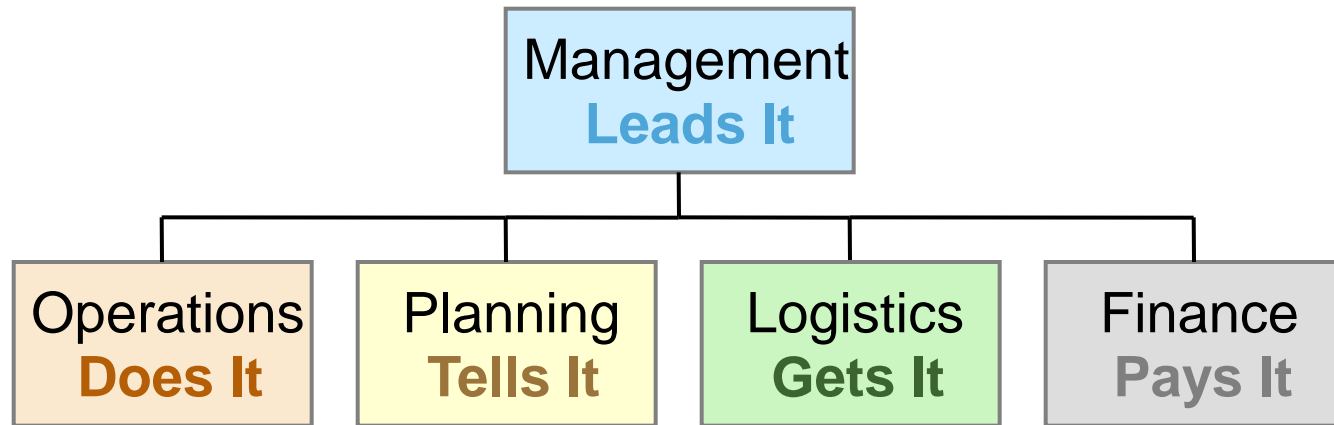
Basic ICS Principle

- A basic ICS principle is that the first Incident Commander is responsible until the authority is delegated to another person.

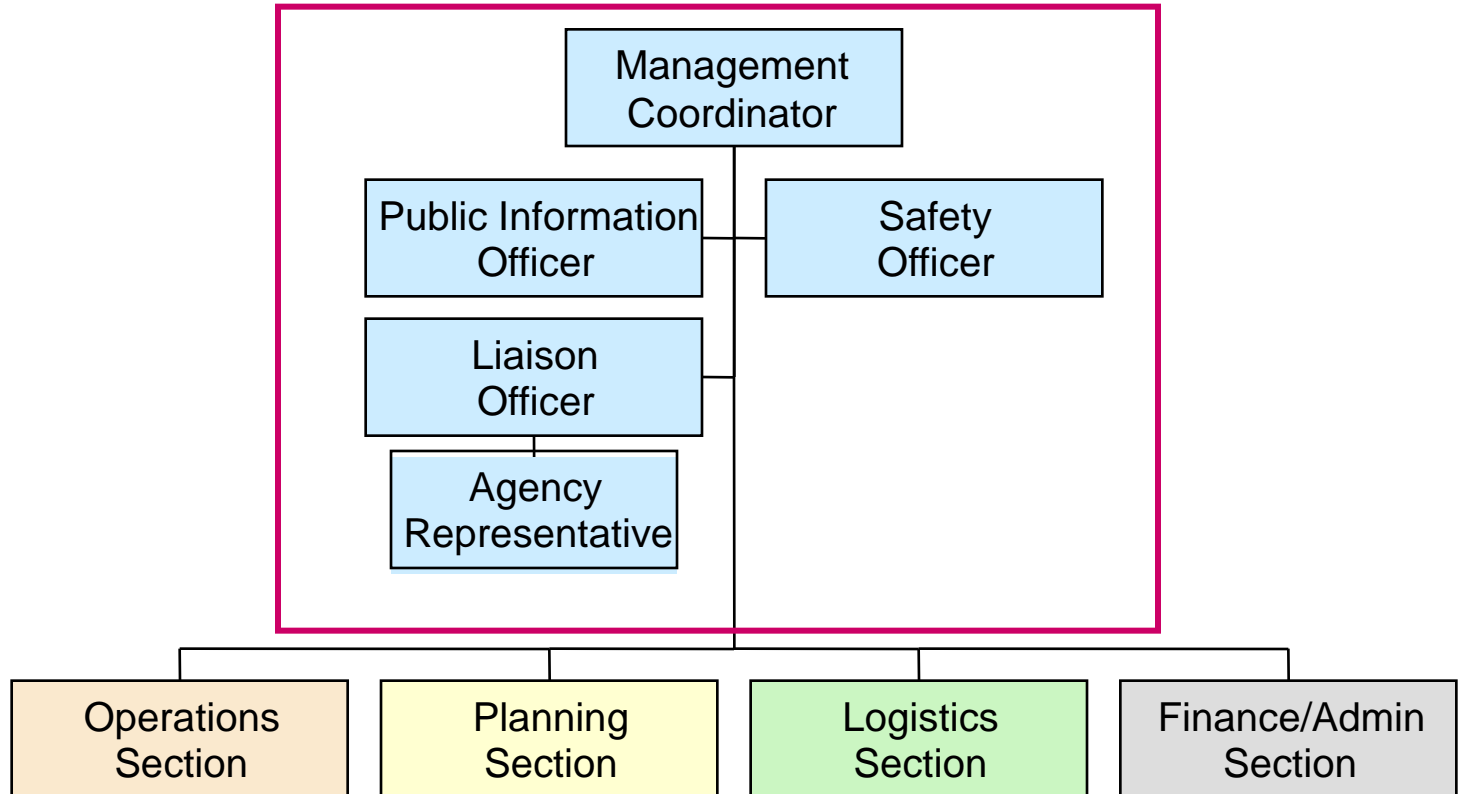


Incident Command System (Basic)

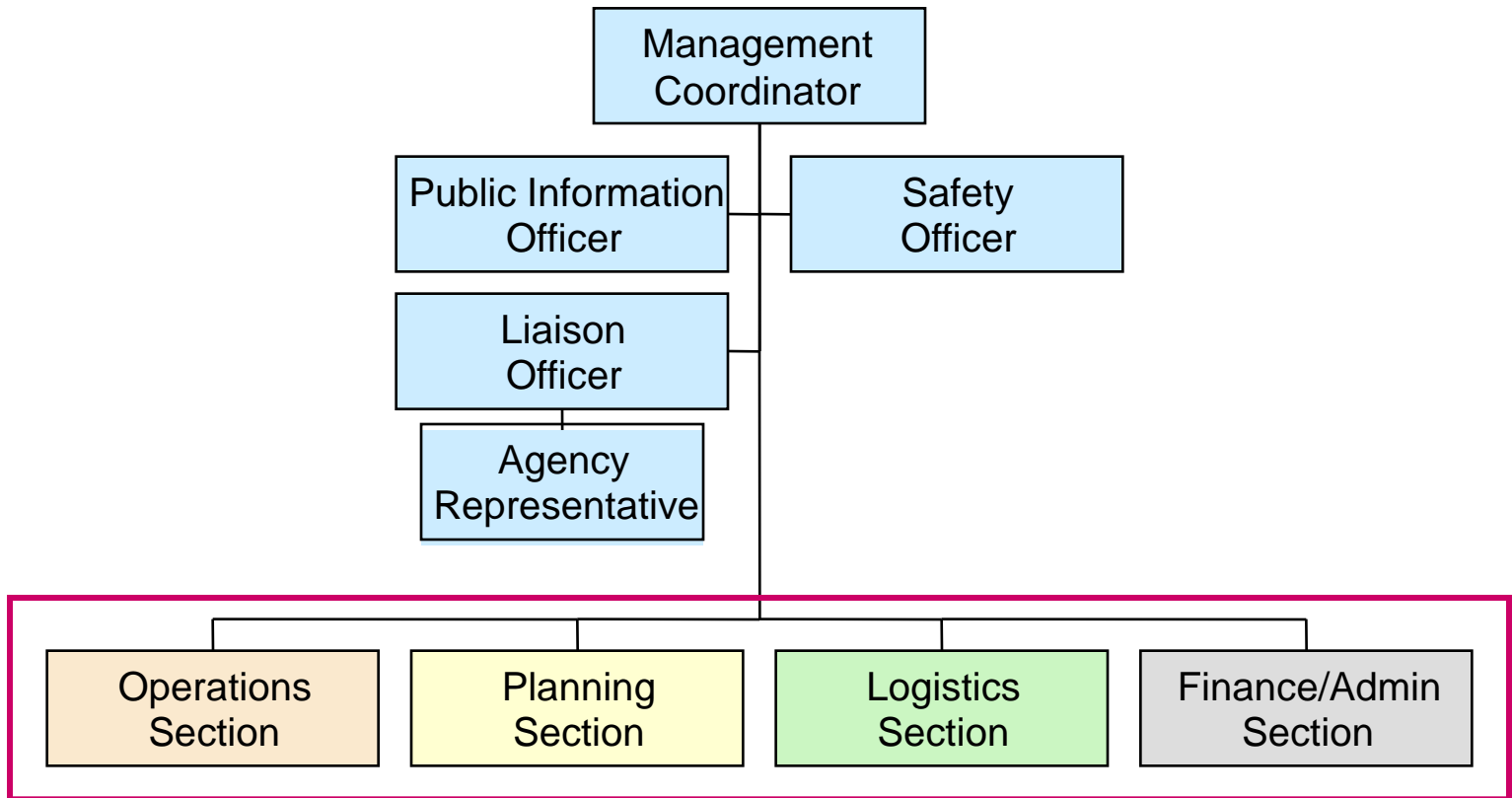
Incident Commander position is always staffed



Management Staff



General Staff



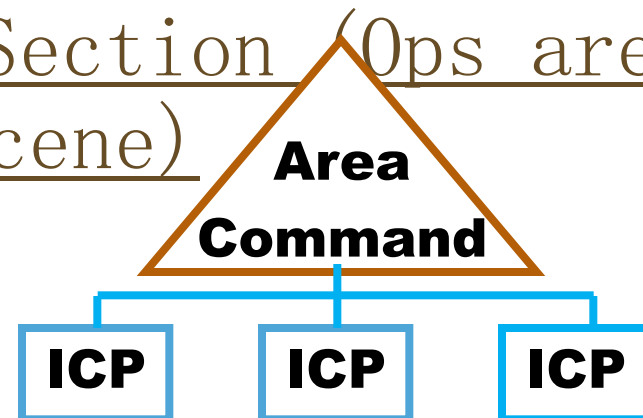
Unified Command

- When two or more agencies respond with their “jurisdictional authority”
 - Example: HazMat spill on Hwy 101
- Joint Information Center may be established as part of Unified Command but work independently



Area Command

- Set overall strategy and priorities
 - Example: H1N1 Flu Clinics
- Allocate resources
- Ensure objectives are met
- No Operations Section (Ops are conducted on-scene)



Common Terminology

- Use plain English
- Helps to reduce confusion



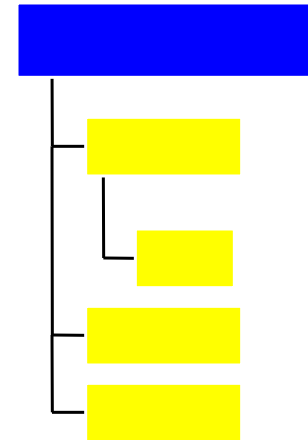
When Told to “Secure a Building...”

- The **MARINES** will surround the building, break down the doors and search for the enemy.
- The **ARMY** will post guards at the gates and check everyone's identification.
- The **NAVY** will turn off the lights, set the alarms and lock the doors.
- The **AIR FORCE** will measure the space and take out a three year lease on the building.



Span of Control

- Number of personnel or resources that one supervisor can manage effectively during an incident
 - From 3 to 7 per supervisor
(5 is optimum)



Personal Accountability

- Check-in
 - Why? Locate personnel in case of an emergency
- After Check-in
 - Locate your incident supervisor and obtain your initial briefing



Incident Facilities

ICS predestinates certain facilities:

- Incident Command Post
- Staging Area
- Base
- Camp



Incident Command Post

- Positioned away from potential hazard area but close enough to maintain command
- Only one per incident
- Normally not relocated



Staging Area

- Where personnel and equipment are kept while waiting for tactical assignments



Incident Base

- Primary logistics and administrative function
coordinated and administered



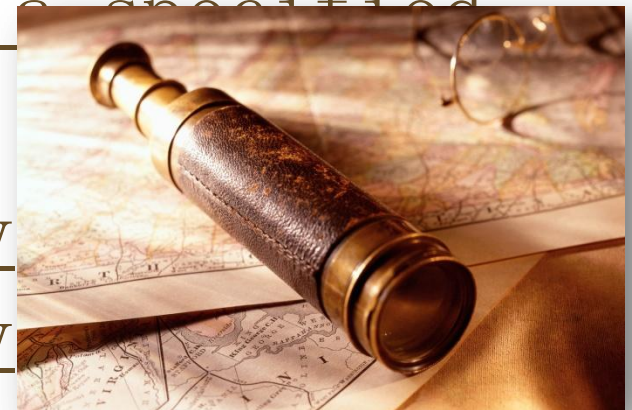
Incident Camps

- Resources kept to support incident operations if Base is not accessible



Incident Action Plan

- Based on “Management by Objectives” to accomplish response tactics
- Provide direction for personnel
- Includes measurable strategic objectives within a specified period
- Ensures continuity and accountability



Standardized Emergency Management System

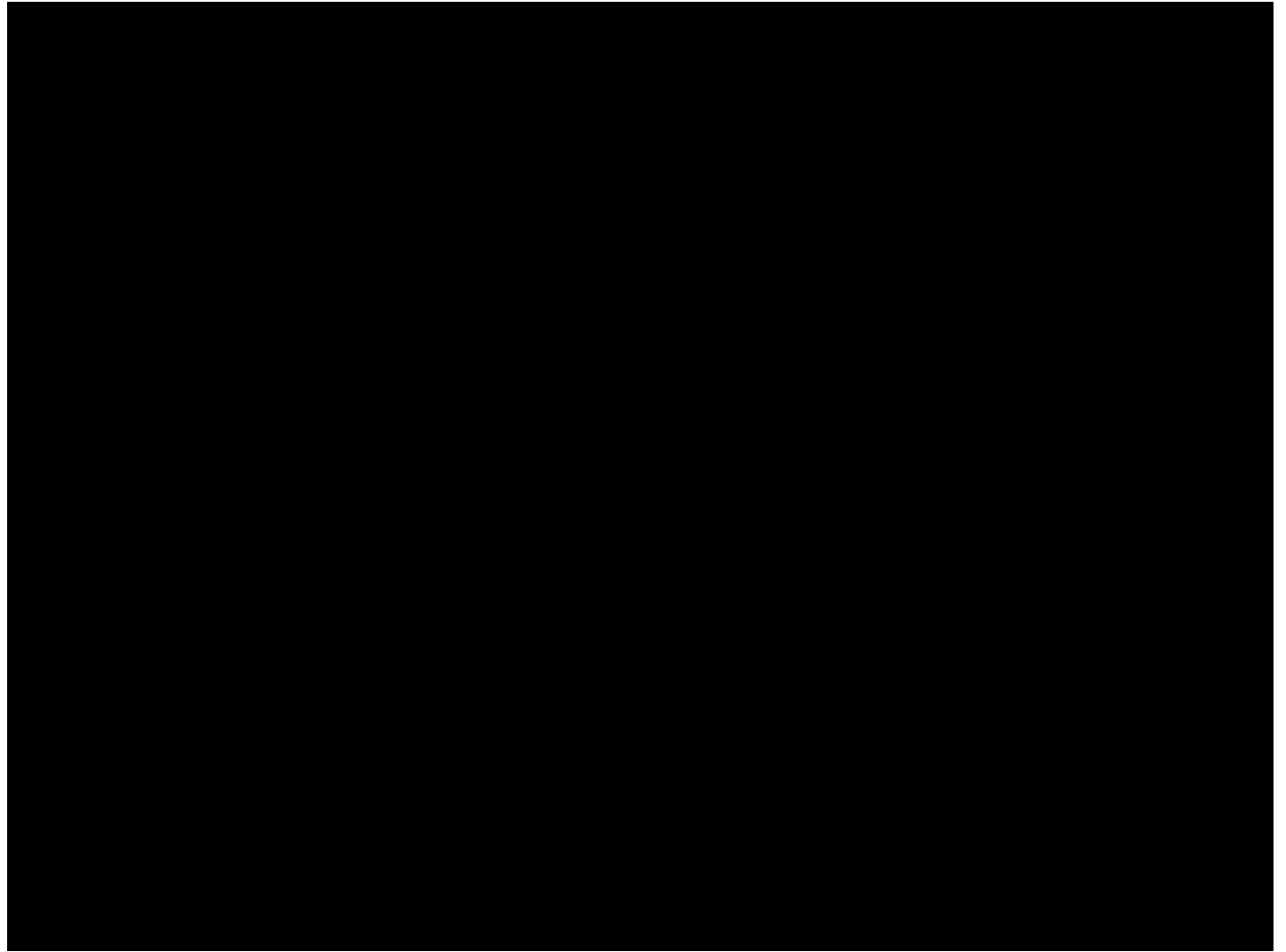
ICS/SEMS/NIMS
COMBO CLASS

Standardized Emergency Management System (SEMS)



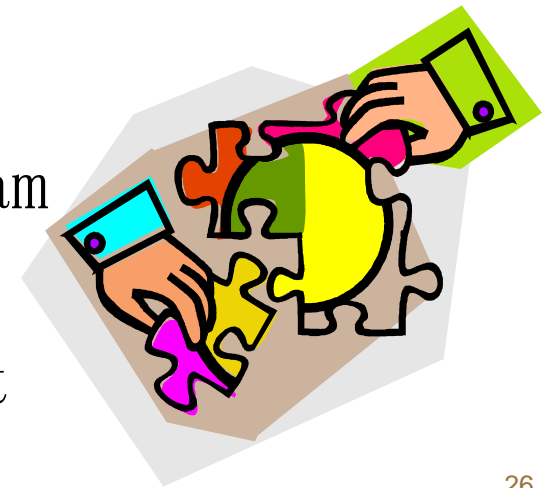
- After the 1991 East Bay Hills fire, Senator Petris introduced SB 1841
- Birth of SEMS

SEMS video



SEMS Components

- The four components of SEMS are:
 - Incident Command System
 - Multi-Agency / Inter-Agency Coordination
 - Master Mutual Aid Program
 - Operational Area Concept



Multi-Agency Coordination

- Support incident management policies and priorities
- Make resource allocation decisions based on incident management priorities
- Supported by Emergency Operations Centers (EOC)
- Example: Resources IC can't get locally

Mutual Aid

- Primary coordination takes place at the local level
- Facilitate timely delivery of assistance
- Voluntary provision of services and facilities

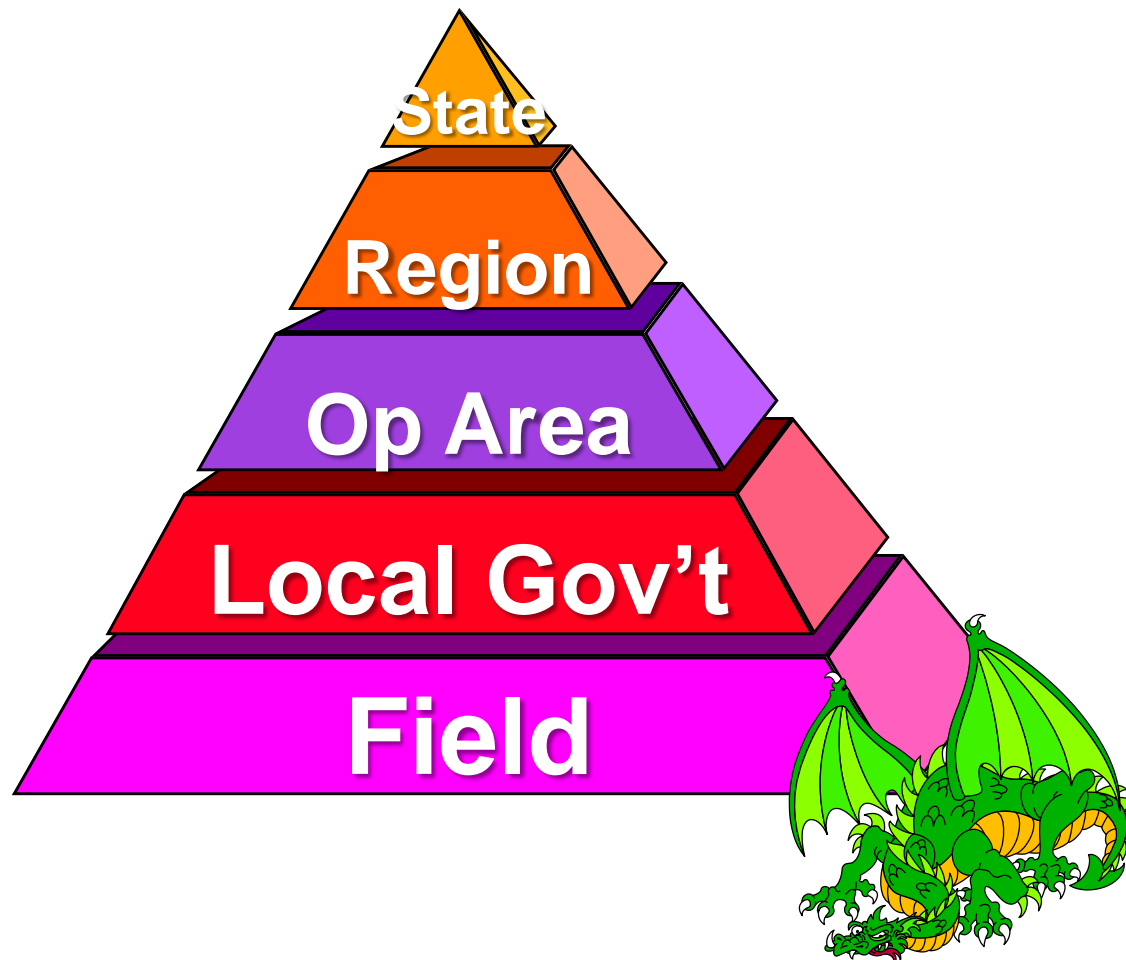


Discipline Specific Mutual Aid Agreements

- Fire & Rescue
- Law Enforcement
 - Coroner (Annex)
- Emergency Management Assistance Compact (EMAC)



SEMS Levels of Response



National Incident Management System

ICS/SEM/NIMS
COMBO CLASS

Benefits of NIMS

- National approach
- Applicable across jurisdictions and functions
- Flexible framework that applies to all phases of incident management



NIMS Integration Center

Maintains and manages national-level preparedness standards related to NIMS

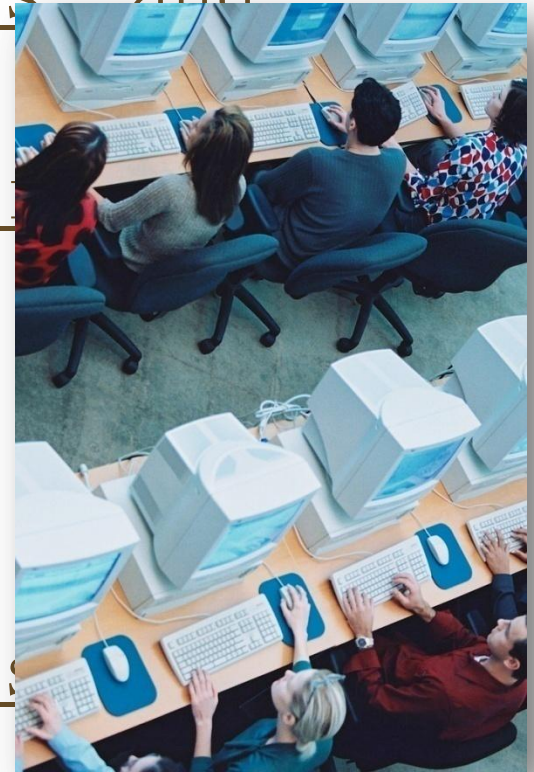
Provides oversight, protocol, & procedures for:

- Training & Exercises
- Personnel qualifications & certifications
- Equipment Certification
- Mutual Aid and EMACs
- Publication Management



Training and Exercises

- Facilitate development and dissemination of national standards, guidelines and protocols.
- Define general training requirements and approved courses.
- Review/approve discipline-specific training requirements



Joint Information Center & System

- Procedures for gathering & sharing information
- Multiple JICs communicate using Joint Information System protocols



Preparedness Organizations

- Establish and coordinate plans and protocols in accordance with State Emergency Plan and SEMS
- Promote interoperability
- Adopting guidelines for resource management



Types of Plans

- Emergency Operations Plan
- Continuity Of Operations Plan
- Corrective Action Plans
- Mitigation Plans
- Recovery Plans



Mutual Aid

- Mutual Aid agreements facilitate the timely delivery of assistance during incidents



Equipment Certification

- Review and approve equipment meeting national standards



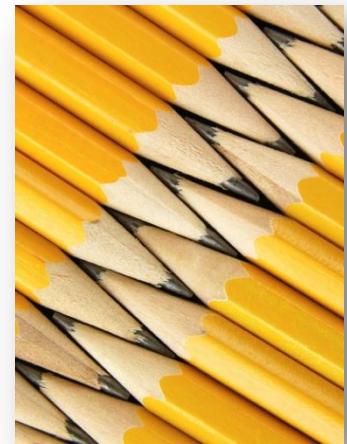
Resource Typing

- Based on performance
- Preparedness Organizations responsible for resource management guidelines and protocol
- Process supports ICS “Common Terminology”



Resource Tracking

- Mobilization through Demobilization
- Tracking tools:
 - ICS Forms
 - Resources Status Report
 - Response Information Management System (RIMS)



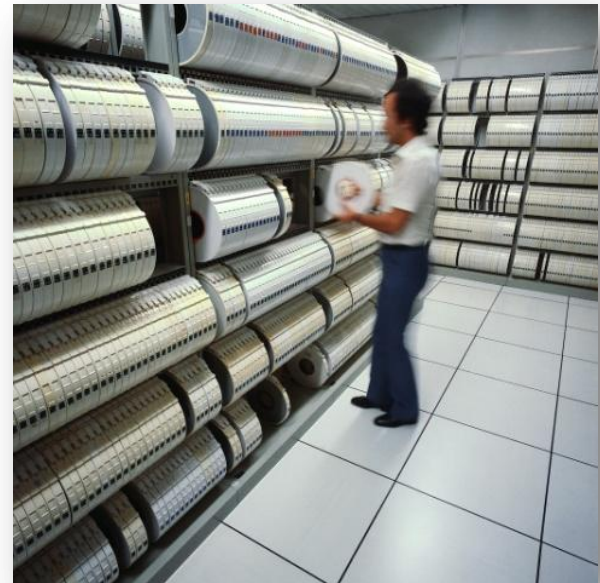
Personnel Qualifications & Certification

- Standards for
 - Experience
 - Credentialing
 - Training - currency requirements
 - Physical and medical fitness



Communications & Data Management

- Facilitate a common operating picture
- Accessible across jurisdictions & agencies
 - Ensure consistency among all responders



Summary

- Incident Command System (ICS)
 - Back-bone of emergency management
- Standardized Emergency Management System (SEMS)
 - California's way of organizing emergency management
- National Incident Management System (NIMS)
 - National model used (used in addition to SEMS in California)

Complete Your Qualification

- Enroll and complete the IS-700a NIMS On-Line Course
- <http://training.fema.gov/EMIWeb/is/is700a.asp>
- Send copy of course completion certificate to Jerry at K6GAC@ARRL.net

Questions

